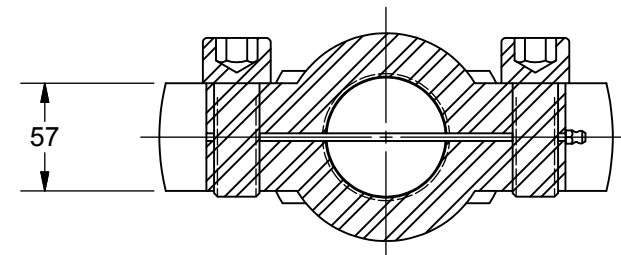


2X M24 BOLT
530 Nm MAX
TORQUE



SECTION A-A
SCALE .25

NOTES

- MATING PARTS:
MOUNTING BRACKET WITH PIVOT PIN PART NUMBER 1455390000.
- NOMINAL FORCE / LOAD CAPACITY (kN) 500, (lb) 112404.
- WEIGHT (kg) 28.0, (lb) 61.7

NOMINAL VALUE	μm	0.1	0.2	0.4	0.8	1.6	3.2	6.3
	μ"	4	8	16	32	63	125	250
ROUGHNESS NO.	N3	N4	N5	N6	N7	N8	N9	

THIS DOCUMENT CONTAINS INFORMATION THAT IS CONFIDENTIAL AND PROPRIETARY TO PARKER HANNIFIN CORPORATION. THIS DOCUMENT IS FURNISHED ON THE UNDERSTANDING THAT THE DOCUMENT AND THE INFORMATION IT CONTAINS WILL NOT BE COPIED OR DISCLOSED TO OTHERS EXCEPT WITH THE WRITTEN CONSENT OF PARKER HANNIFIN. WILL NOT BE USED FOR ANY PURPOSE OTHER THAN CONDUCTING BUSINESS WITH PARKER HANNIFIN, AND WILL BE RETURNED AND ALL FURTHER USE DISCONTINUED UPON REQUEST BY PARKER HANNIFIN.

(UNLESS OTHERWISE SPECIFIED) TOLS & FINISHES PER ES-008. GEOMETRIC TOLS PER CURRENT ASME Y14.5M STANDARD. (UNLESS OTHERWISE NOTED) DIMENSIONS: MM (IN.)

© COPYRIGHT PARKER. ALL RIGHTS RESERVED. YEAR OF COPYRIGHT IS FIRST YEAR INDICATED ON THIS DOCUMENT.

1	38994	10/10/10			
REV.	E.C.NO.	DATE	SCALE	DATE	DRAWN BY
			.25X	10/10/10	Parker Hannifin
					CHK. BY
					APPD. BY

MATERIAL STEEL	PARKER HANNIFIN CORP. CYLINDER DIVISION DES PLAINES, IL 60016	 Cylinder
HEAT TREATMENT		
ROD EYE WITH SPHERICAL BEARING		
METRIC Ø100mm PIN M64x3 THREAD		

THIRD ANGLE VIEW PROJECTION	
PART NO. 1452630000	
DRAWING NO. 1452630000_CTLG	REV. 1

B

Autodesk Inventor